

# ELLIOTT HI-REACH

MODEL # ECH-50 SERIAL # AE-1514  
E-1514

## UNIT DESCRIPTION

Physical statistics for the units described herein include the following:

Minimum overhead clearance required 11' ft. 1" in.

Overall length in road position 33' ft. 6" in.

Shipping weight - Front Axle 8,470 lbs.

Shipping weight - Rear Axle 13,030 lbs.

Total shipping weight 21,500 lbs.

Wheelbase (WB) 214 in.

Rear of cab to rear axle centerline (CA) 144 in.

Maximum height from sheave to ground 50' 10"

Maximum horizontal reach 38'

Minimum horizontal reach 22'

This unit is NON-INSULATED X

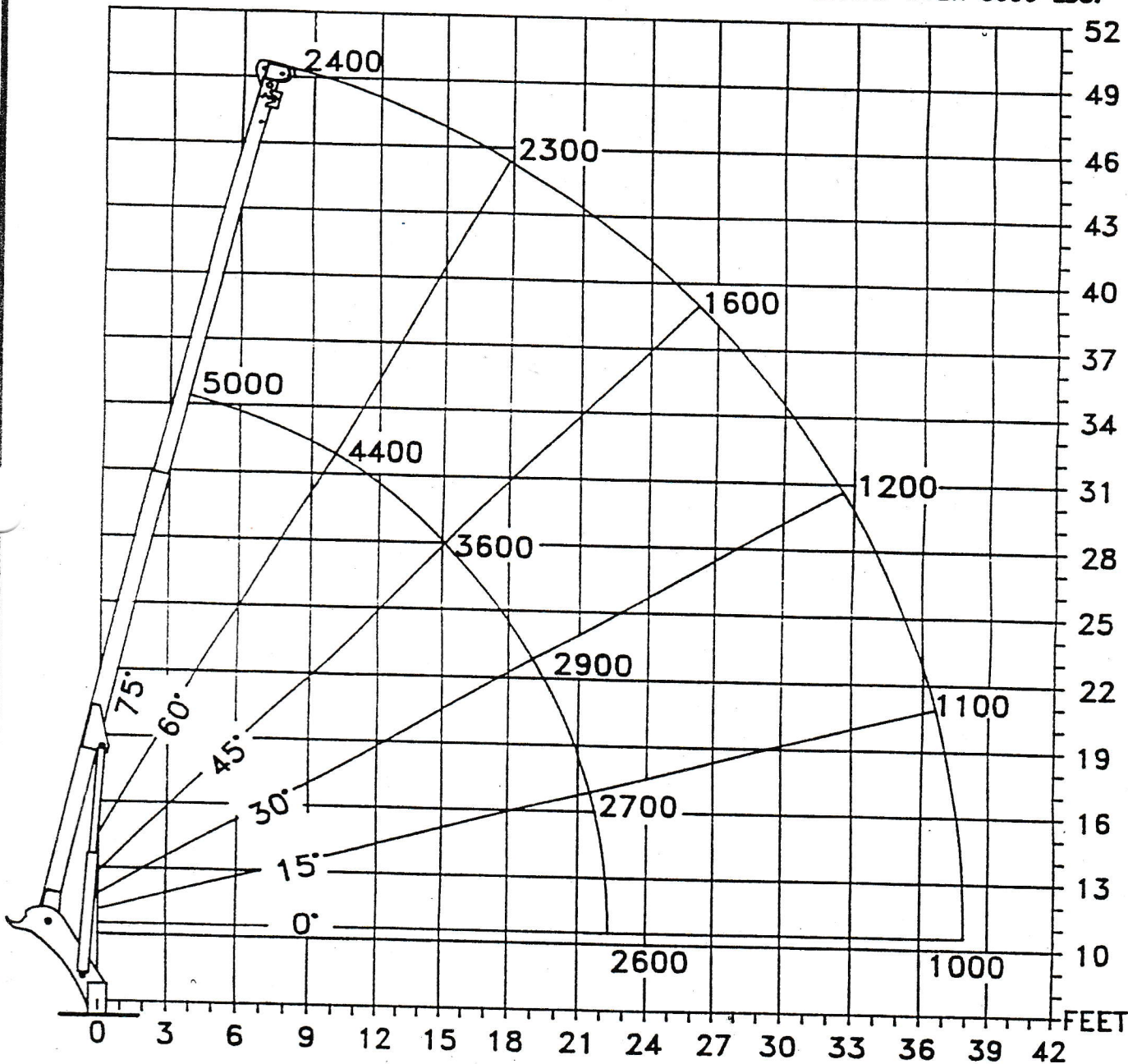
Additional Information: See Line Set Ticket

# MAXIMUM WORKING LOADS CRANE OPERATION

## MODEL ECH-50

USE OUTRIGGERS AT ALL TIMES • AVOID JERKING LOAD  
WINCH LINE LOAD WITH PLATFORM ATTACHED

360° RADIUS • 1500 P.S.I. MAX • USE 2 PART LINE FOR LOADS OVER 3000 LBS.



# ELLIOTT

EQUIPMENT COMPANY

OMAHA, NEBRASKA

DO NOT PAINT OVER ANY LABELS

1005600 122394