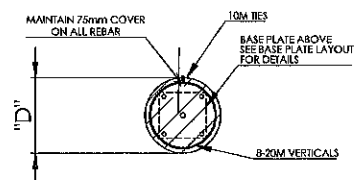
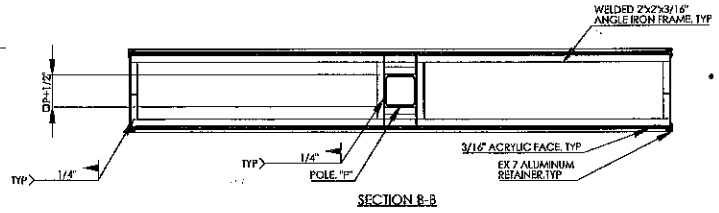


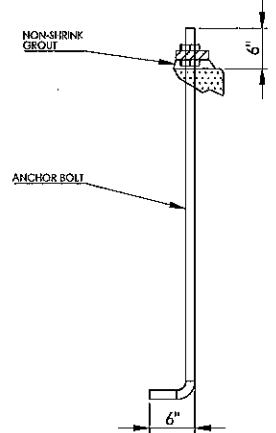
TYPICAL CIP PILE ELEVATION



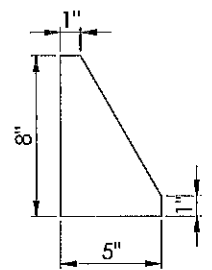
SECTION A-A
CIP PILE SECTION



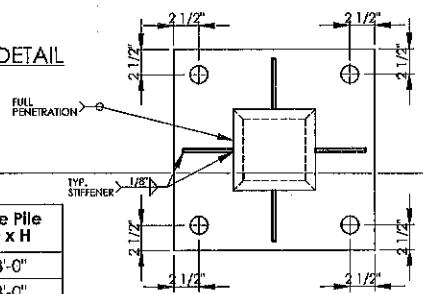
SECTION B-B



ANCHOR BOLT DETAIL



STIFFENER



BASE PLATE LAYOUT
WELDED TOP & BOTTOM
TO POLE

Dim 'A'	Dim 'B'	Anchor Bolt Spec	Base Plate Spec	Pole Spec, P	Concrete Pile Spec, D x H
3'	6'	QTY 4 ϕ 1"x4'-0"	15"x15"x 1"	5"x5"x0.188"	ϕ 30"x8'-0"
4'	8'	QTY 4 ϕ 1"x4'-0"	16"x16"x 1"	6"x6"x0.188"	ϕ 30"x8'-0"
5'	10'	QTY 4 ϕ 1"x4'-0"	17"x17"x1 1/4"	7"x7"x0.188"	ϕ 30"x10'-0"
6'	12'	QTY 4 ϕ 1 1/4"x4'-0"	18"x18"x1 1/4"	8"x8"x0.250"	ϕ 30"x10'-0"

FOUNDATION DIMENSION CHART

- NOTES:
- 1" GROUT UNDER BASE PLATES AFTER SIGN INSTALLATION.

DRAWING TITLE: 1 POST PYLON - FOUNDATION DETAILS
 NO.: 1 DESCRIPTION: ORIGINAL DATE: 1/3/2018 SCALE: NTS



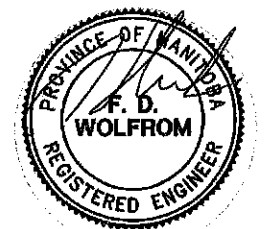
MANITOBA
Standard Sign Details

LAYOUT# PS8-20.1
 PAGE# 1 OF 2

This document is null and void without official, current year, embossed, proof of membership seal



Registered Professional Engineer's Stamp Goes Here



2018-01-04